





## Daylesford Crescent, Cheadle

Guide Price £695,000

3 2 1

- MID-CENTURY MODERN SINGLE STOREY HOME.
- CORNER GARDEN PLOT.
- EN SUITE TO THE MASTER.
- KITCHEN DINER.
- LARGE FAMILY BATHROOM.
- MICHAEL SASSOON ARCHITECTURALLY DESIGNED.
- THREE BEDROOMS .
- OPEN CONCEPT LIVING SPACE.
- OFF ROAD PARKING WITH EV CHARGING POINT.
- CHEADLE LOCATION.

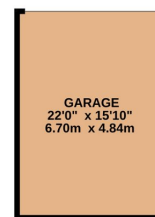


An architectually designed MID-CENTURY MODERN SINGLE STOREY HOME, occupying an enviable CORNER GARDEN PLOT and being situated within a STONES THROW OF CHEADLE VILLAGE. The accommodation comprises of an entrance hallway with W.C, an open plan "Bulthaup" kitchen diner with utility room, a stunning open concept living and dining room with double glazed patio doors flooding the room with natural light and three double bedrooms served by an en suite shower room to the master and large family bathroom suite. Landscaped large garden. Off Road Parking with integral garage.

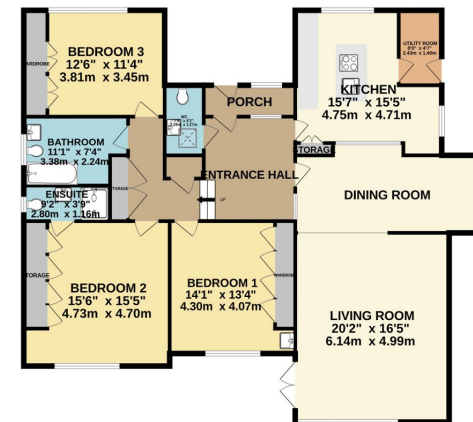




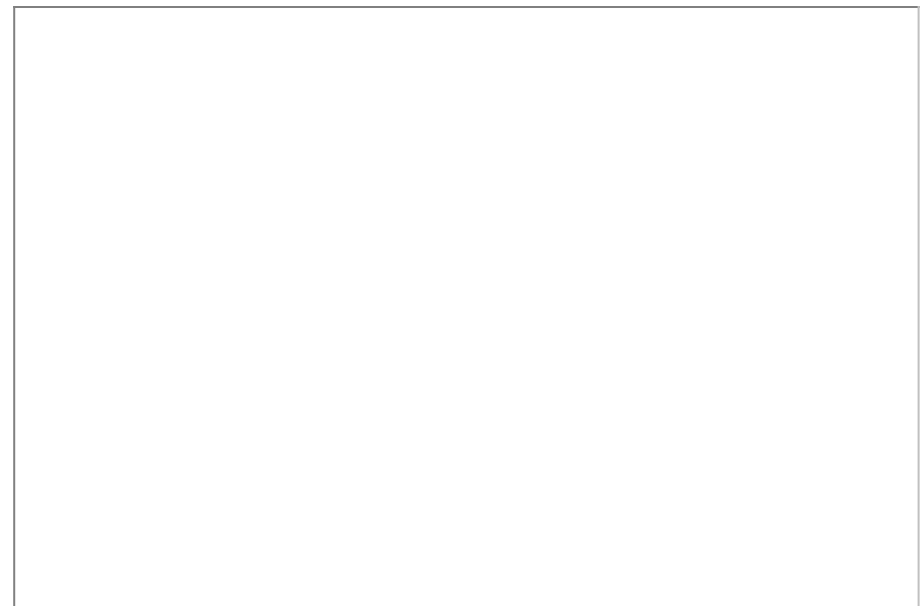




GROUND FLOOR  
2048 sq.ft. (190.3 sq.m.) approx.



TOTAL FLOOR AREA: 2048 sq.ft. (190.3 sq.m.) approx.  
Whilst every attempt has been made to ensure the accuracy of the floorplan contained herein, measurements of rooms, windows, doors and any other items are approximate and no responsibility is taken for any error, omission or mis-statement. This plan is for illustrative purposes only and should be used as such by any prospective purchaser. The services, appliances and appliances shown have not been tested and no guarantee as to their operability or efficiency can be given.  
Made with Metreplan (2022)



9 Gatley Road, Cheadle, Cheshire SK8 1LY Tel. 0161 428 1488 Fax. 0161 428 1479  
Email. [mail@andrewdawson.co.uk](mailto:mail@andrewdawson.co.uk)